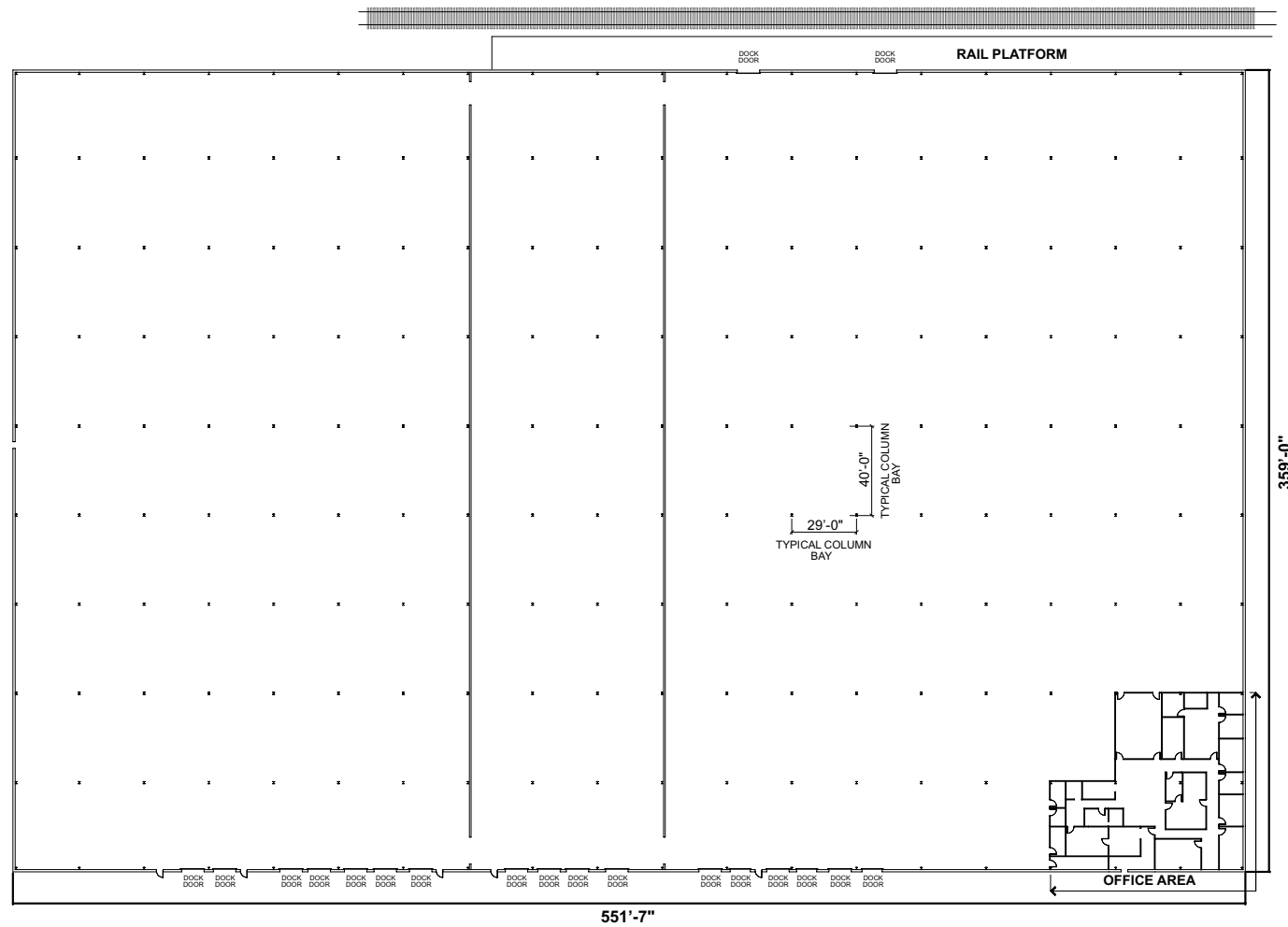


FOR LEASE

1665 DOGWOOD DRIVE

Conyers, Georgia



Floor Plan

For more information
contact exclusive agent:

Bobby Mayson
bmayson@lavista.com

770.729.2817 (direct)
770.729.2856 (fax)



770.448.6400

All information furnished regarding the property for sale, rental or financing is obtained from sources deemed reliable. No representation is made to the accuracy thereof and is submitted subject to errors, omissions, change of price rental or other conditions, prior sale, lease, or financing, or withdrawal without notice. First Industrial Realty Trust, Inc. represents the Seller Lessor in this transaction and as such owes all duties and obligations thereto.

FIRST INDUSTRIAL REALTY TRUST, INC.
Five Concourse Parkway, Suite 2020, Atlanta, Georgia 30328
P: (678) 443-9670 F: (678) 443-9973 www.firstindustrial.com



FOR LEASE

1665 DOGWOOD DRIVE

Conyers, Georgia



PROPERTY OVERVIEW

1665 Dogwood Drive is a multi-tenant bulk warehouse facility located in the I-20 East Industrial Market.

Situated just 1/4 mile from the West Avenue exit of Interstate 20, the property offers superior access to major thoroughfares and area amenities.

PROPERTY STATISTICS

Available SF 192,121± SF WH 5,879± SF Office 198,000± SF Total	Sprinkler System 100% Sprinklered
Lease Rate \$3.25/SF Net	Power Heavy
Ceiling Height 20' Clearance	Column Spacing 30' x 40'
Docks 19 Dock-High Doors (some with levelers) 1 Drive-In Door	Zoning Light Industrial (M-1)
Trailer Storage 40+ Spaces	Land Area 9.46 Acres
	Location I-20 Exposure 1/4 mile to I-20 at West Avenue Exit



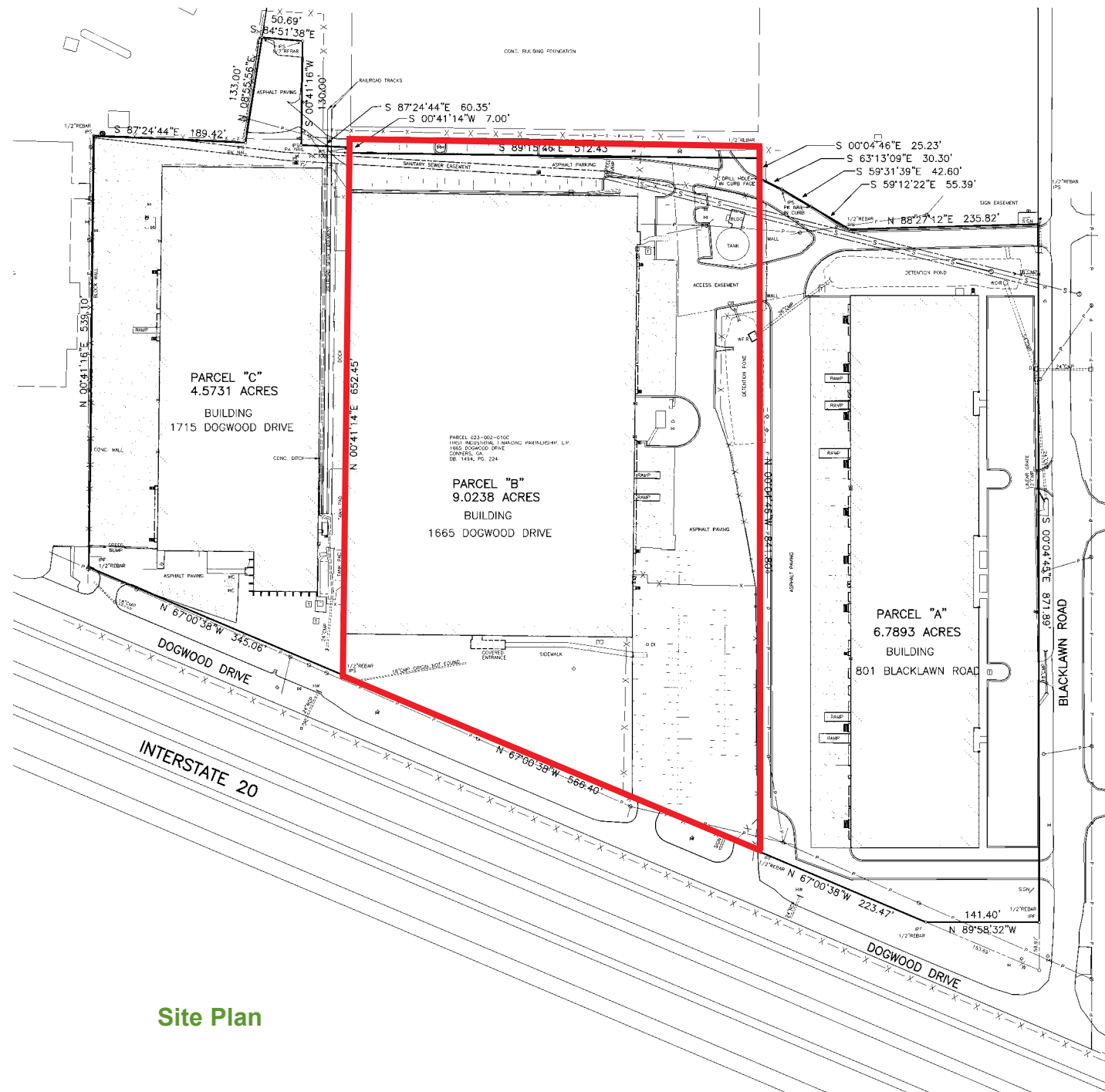
FIRST INDUSTRIAL REALTY TRUST, INC.
Five Concourse Parkway, Suite 2020, Atlanta, Georgia 30328
P: (678) 443-9670 F: (678) 443-9973 www.firstindustrial.com



FOR LEASE

1665 DOGWOOD DRIVE

Conyers, Georgia



Site Plan

