

# FOR SALE or LEASE

**CORNERSTONE VILLAGE**  
Dacula, Georgia 30019



**Rush Bradley**  
770.729.2818 :: Direct  
770.448.6400 :: Main  
770.729.2856 :: Fax  
[rbradley@lavista.com](mailto:rbradley@lavista.com)

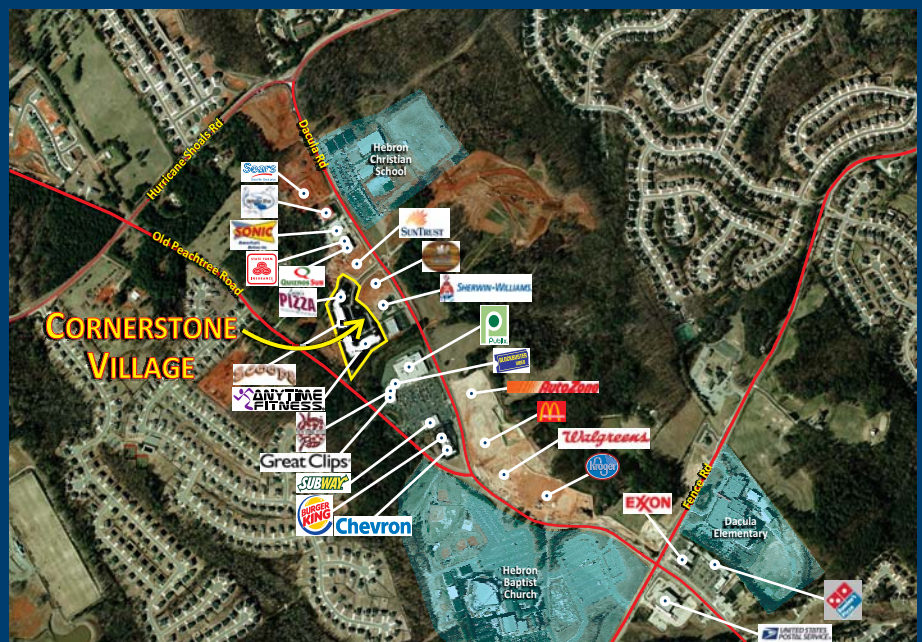
## Investment Summary



<b>Location</b>	2300 Liam Avenue Dacula, GA 30019 Near the intersection of Old Peachtree Rd and Dacula Road
<b>Size</b>	18,000 RSF - Building 1 23,000 RSF - Building 2 4.80 Acre Site
<b>Year Built</b>	2007
<b>Availability</b>	55% occupied 16,800 RSF available

DEMOGRAPHICS	1 Mile	3 Mile	5 Mile
2015 Projected Population . . . . .	3,549	42,097	121,673
Population Growth (1990-2000) . . . . .	205.54%	162.92%	143.10%
2010 Estimated Average Household Income . . . . .	\$101,864	\$93,960	\$86,986

## Aerial Photograph



*No warranty or representation, expressed or implied, is made as to the accuracy of information contained herein. In consideration of the within information, all parties agree to rely solely on its right, and assumes the duty to independently obtain and analyze all information.*

# FOR SALE or LEASE

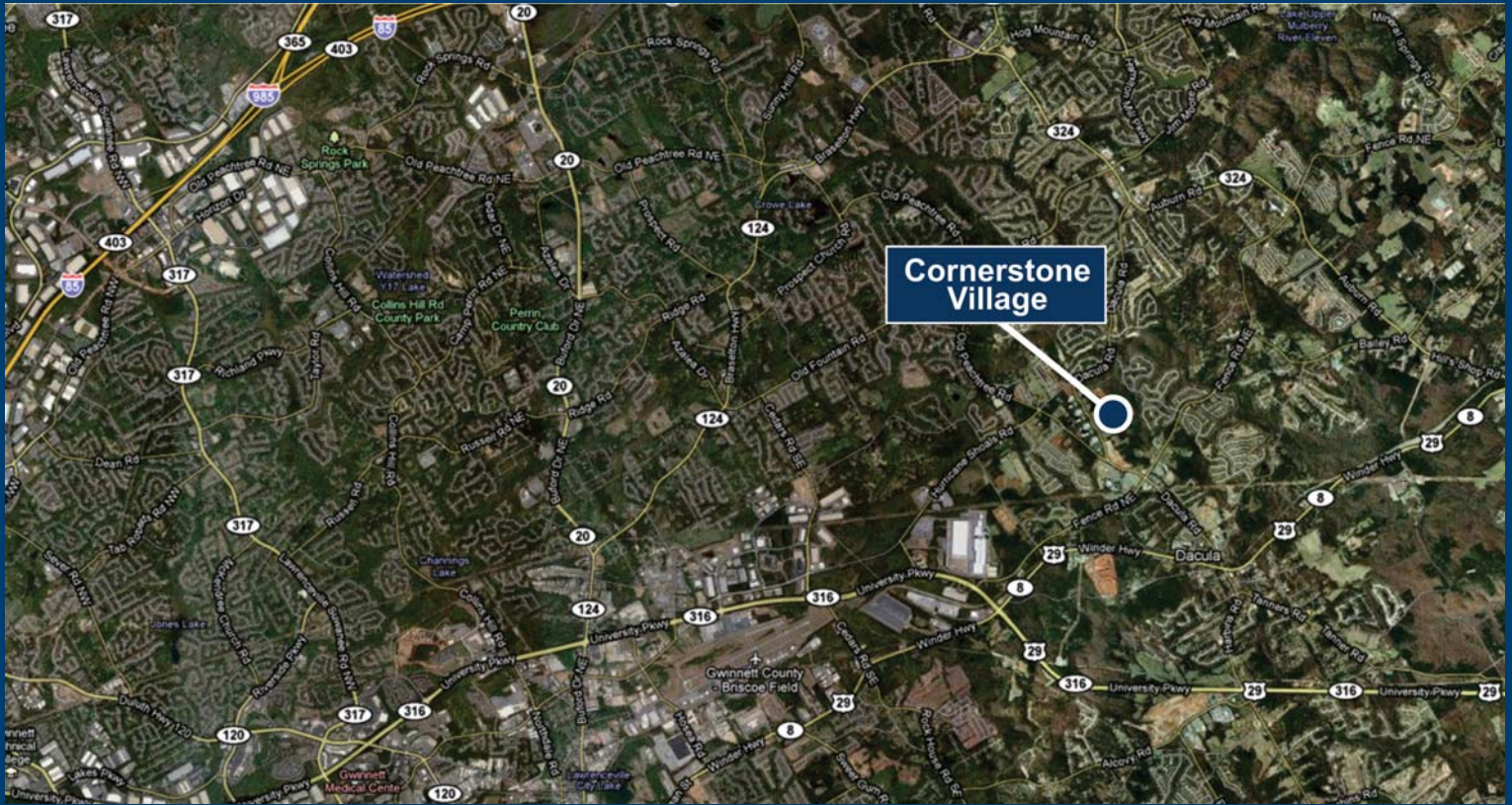
**CORNERSTONE VILLAGE**  
Dacula, Georgia 30019

**LAVISTA**  
ASSOCIATES, INC.

Commercial and Industrial, Realtors®

**Rush Bradley**  
770.729.2818 :: Direct  
770.448.6400 :: Main  
770.729.2856 :: Fax  
rbradley@lavista.com

## Aerial Photograph



## Floorplan



*No warranty or representation, expressed or implied, is made as to the accuracy of information contained herein. In consideration of the within information, all parties agree to rely solely on its right, and assumes the duty to independently obtain and analyze all information.*